

# Canvas 2 by Kvadrat

## E TESSUTO FABRIC

90% New Wool - 10 % Nylon

**Abrasioni** Abrasion

EN ISO 12947

100.000 Martindale

**Resistenza alla luce** Lightfastness

ISO 105-B02

Note 5-7

**Resistenza sfregamento a secco** Fastness to dry rubbing

ISO 105-X12

Note 4-5

**Pilling** Pilling

ISO 12945

Note 4-5

more information [www.kvadrat.dk](http://www.kvadrat.dk)

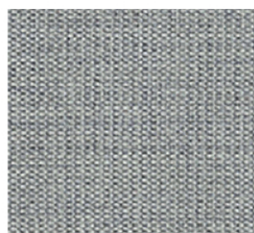
### Resistenza al fuoco Flame resistance

AS/NZS 1530.3  
BS 5852 Crib 5 with treatment  
BS 5852 Ignition source 3  
BS 5852 Part 1  
EN 1021-1/2  
GB 50222 B1 with treatment IMO  
FTP Code 2010:Part 8  
NF D 60 013  
NFPA 260  
SN 198 898 5.3 with treatment  
UNI 9175 11M  
US Cal. Bull. 117-2013  
ONORM B1/Q1

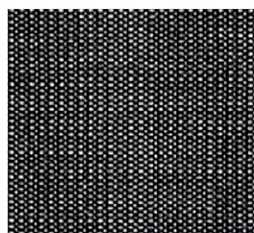


Formula "Selected"  
"Selected" formula

N. Colori N. Colors 14



124



154



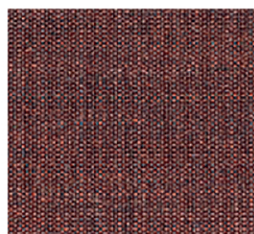
244



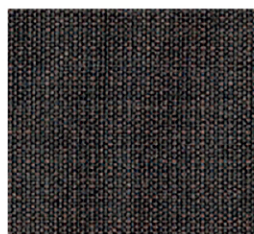
264



356



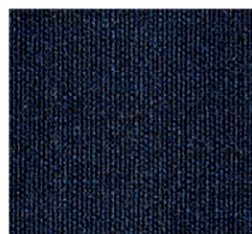
576



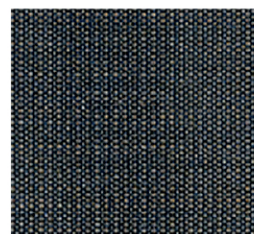
674



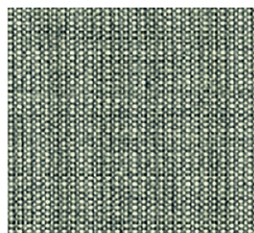
764



794



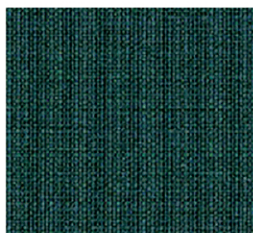
854



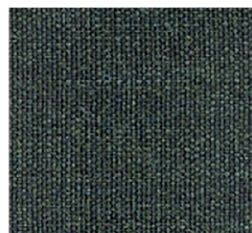
926



936



984



996

## D TESSUTO FABRIC

93% New Zealand Wool - 7% Polyamide

**Abrasioni** Abrasion

EN ISO12947-2 200.000 Martindale  
ASTM D4966-02 200.000 Martindale

**Resistenza alla luce** Lightfastness

EN ISO105-B02 Note 5-7

**Resistenza sfregamento a secco** Fastness to dry rubbing

EN ISO105-X12 Note 4-5

**Pilling** Pilling

EN ISO 12945-2 Note 4-5

more information [www.gabriel.dk](http://www.gabriel.dk)

### Resistenza al fuoco Flame resistance

BS5852 Part 1 0,1 Cigarette&match  
BS 476 Part 7, class 2  
BS EN 1021 1&2 Cigarette&match  
Class Uno UNI9175 Class1EMME  
CA TB117-2013  
IMO MSC307(88) Annex 1 part 8  
MED Certificate IMO  
ONORM A3800-B2-B3825-Q1UK  
Certificato MED IMO UK  
BS5852 Crib 5 (flame retardant)  
BS7176 Medium hazard (flame  
retardant)

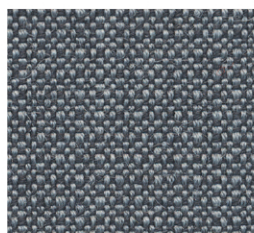


Formula "Selected"  
"Selected" formula

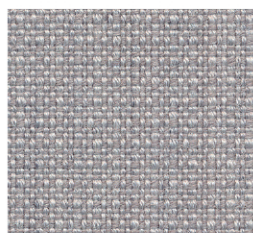
N. Colori N. Colors 15



4013



4022



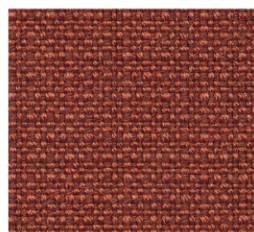
4033



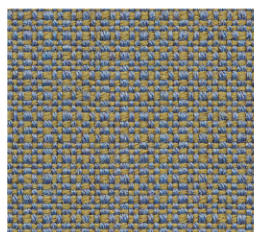
4115



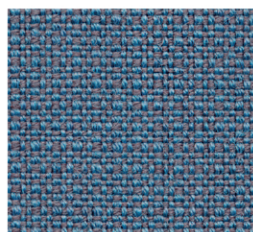
4125



4301



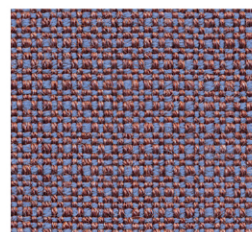
4603



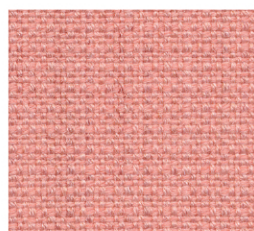
4604



4701



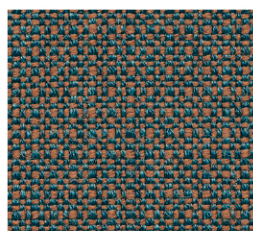
4702



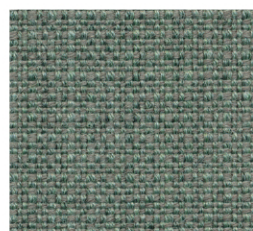
4712



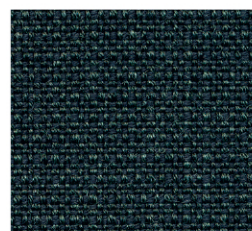
4721



4731



4752



4761

## A TESSUTO FABRIC

98% Polyester riciclato post-consumo - 2% Polyester

Abrasioni Abrasion

EN ISO 12947 - 2  
ASTM D4157 - 07

100.000 Martindale  
100.000 Double rubs wyzenbeek

Resistenza alla luce Lightfastness

EN ISO 105 - B02

Note 5-8

Resistenza sfregamento a secco Fastness to dry rubbing

EN ISO 105 - X12

Note 4-5

Pilling Pilling

EN ISO 12945-2

Note 4-5

more information [www.gabriel.dk](http://www.gabriel.dk)

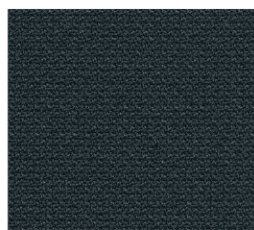
**Resistenza al fuoco**  
Flame resistance

BS EN1021 1&2 Cigarette & Match  
CA TB 117-2013  
ASTM E 84 Classe I

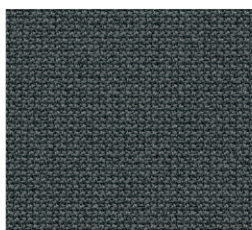


Formula "Selected"  
"Selected" formula

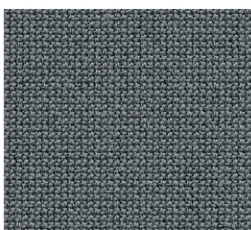
N. Colori N. Colors 14



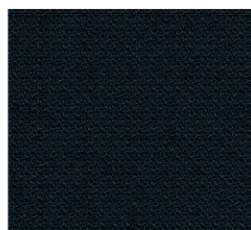
60019



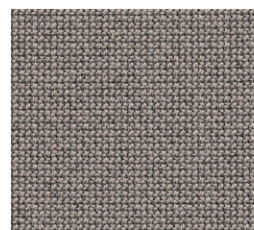
60109



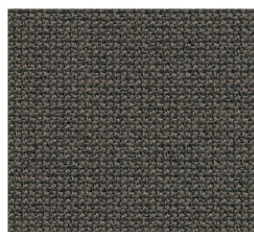
60110



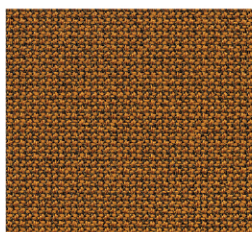
60111



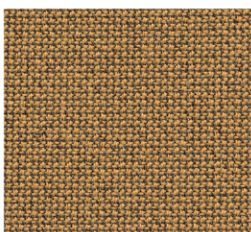
60168



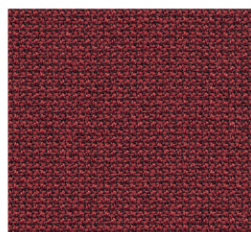
60169



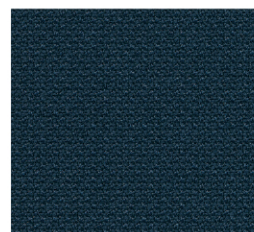
62082



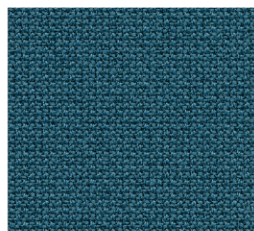
62083



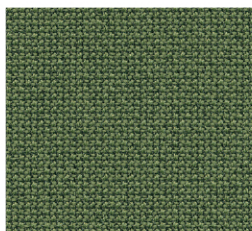
64196



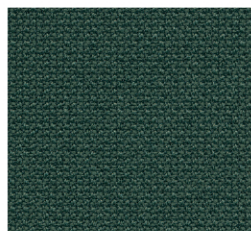
66165



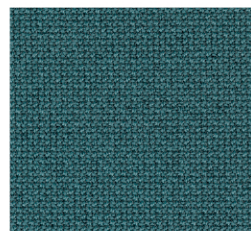
66167



68181



68182



68187

## Q PELLE LEATHER

100% Tori

**Resistenza alla luce** Lightfastness

UNI EN ISO 105-B02 > 4/5

**Resistenza sfregamento a secco** Fastness to dry rubbing

UNI EN ISO 11640 > 1.000 cicli - 4/5 GRS

**Resistenza allo sfregamento a bagnato** Fastness to wet rubbing

UNI EN ISO 11640 > 200 cicli - 4/5 GRS

**Robustezza** Tear strenght

UNI EN ISO 3377-1 >134N

more information [www.maxpell.it](http://www.maxpell.it)

**Resistenza al fuoco**  
Flame resistance

IMO FTPC 8  
FMVSS 302  
TB 117-2013

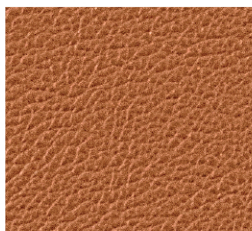


Formula "Selected"  
"Selected" formula

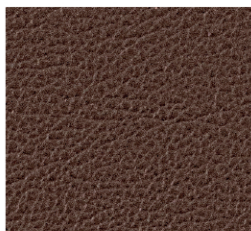
N. Colori N. Colors 12



7



15



17



20



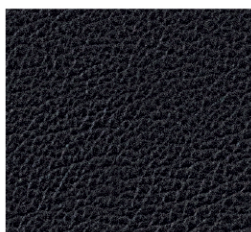
22



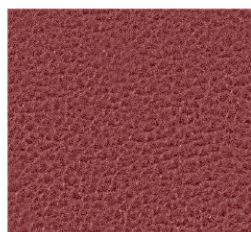
23



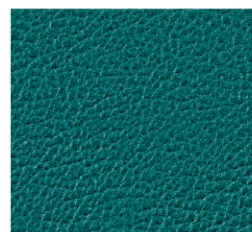
28



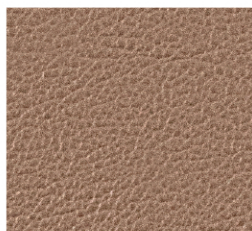
32



40



52



54



55

## D TESSUTO FABRIC

85% Lana Neozelandese - 15% Poliammide

**Abrasioni** Abrasion

EN ISO 12947-2 200.000 Martindale  
ASTM D4966-02 100.000 Martindale

**Resistenza alla luce** Lightfastness

EN ISO 105-B02 Note 5-6

**Resistenza sfregamento a secco** Fastness to dry rubbing

EN ISO 105-X12 Note 4-5

**Pilling** Pilling

EN ISO 12945-2 Note 4

more information [www.gabriel.dk](http://www.gabriel.dk)

### Resistenza al fuoco Flame resistance

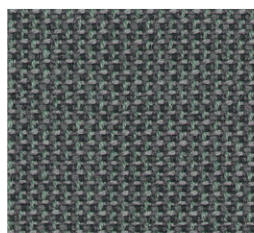
BS EN 1021 1&2 Sigaretta e fiammifero  
BS 5852 Parte 1 0,1 Sigaretta e fiammifero  
BS 5852 Presepe 5  
CA TB117-2013  
Passerà anche altri standard di infiammabilità. Le prestazioni ritardanti di fiamma dipendono dalla schiuma utilizzata.  
Non contiene sostanze chimiche ignifugo.

 **Formula "Open"**  
"Open" formula

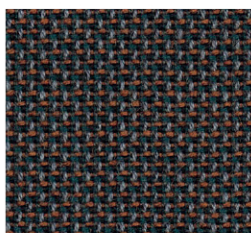
N. Colori N. Colors 14



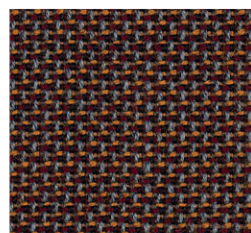
1101



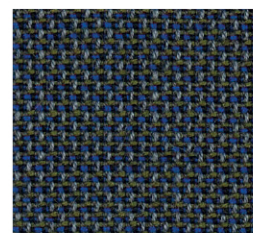
2101



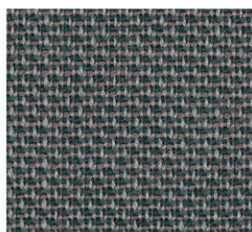
2102



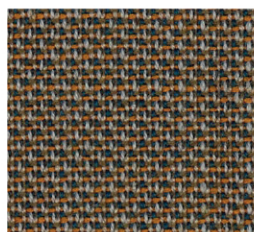
2103



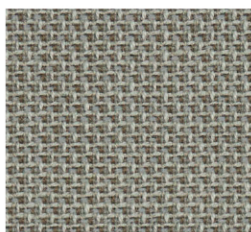
2104



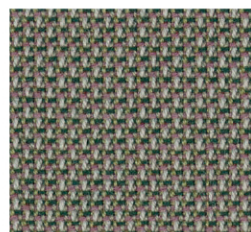
3101



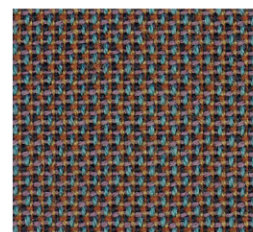
3102



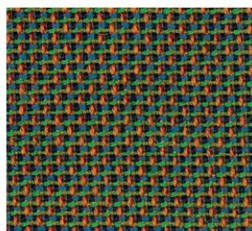
5101



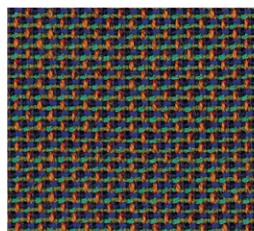
6101



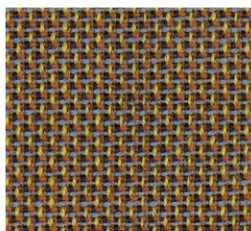
7101



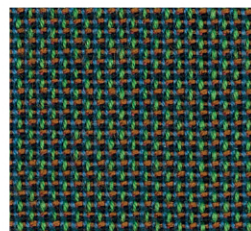
10102



10103



12101



14101