



LEX
TASK CHAIR

CATAS

UNI EN 1335 part. 1/2/3 tip. B
(only for version without headrest)

COMPOSITION AND MATERIALS

PLASTIQUE Plastique noir ou blanche (RAL 9003)

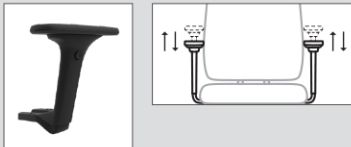
STRUCTURE, PADDING

- PA (nylon) frame with sliding seat (range 60 mm)
- Injected foam seat padding, density 60kg/m³, fire retardant
- Height adjustable backrest in PP with up-down system (range 60mm)
- Polyurethane foam backrest padding, density 30 Kg/m³, thickness 30 mm, fire retardant

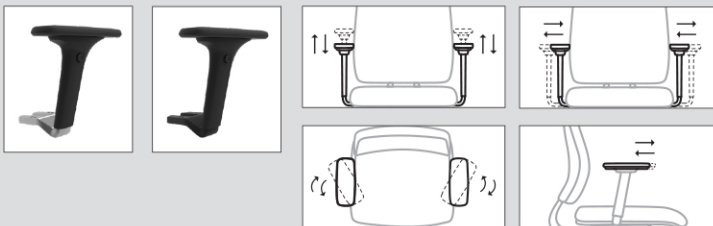
HEADREST Available with height and tilt adjustable padded headrest (range 60 mm), with injected foam, density 65 kg/m³ (cannot be added after purchase), fire retardant

ACCOUDOIRS

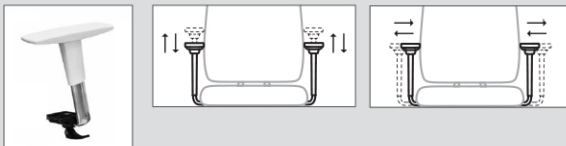
- **Black plastics**
- BR009.N - Height adjustable black nylon armrests with PU armpads



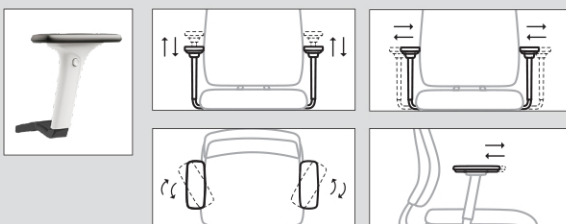
BR010.L - 4D adjustable polished aluminum armrests with PU armpads
BR010.N - 4D adjustable black nylon armrests with PU armpads



- **White plastics**
- BR196.W - 2D adjustable armrests with white plastic pads and chromed metal frame

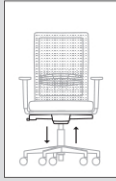


BR010.W - 4D adjustable white nylon armrests with PU armpads



MECHANISM AND SEAT REGULATION

MS11K - Synchronized mechanism with 5 locking positions



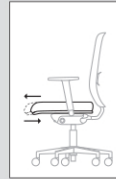
Seat height
Pull the lever A upwards without sitting to increase the height of the seat. Press the lever A upwards to reduce the height of the seat.



Tilting of the chair
Pull the lever B upwards to unlock the swing. Press Lever B downwards to lock in the desired position.



Tension control
Turn lever C clockwise to decrease the tilting resistance. Turn lever C counterclockwise to increase the tilting resistance.



Sliding seat
Press the button situated on the right side of the seat to adjust the seat depth. Release the button to lock the seat in the desired position.



Lumbar support height adjustment
Raise or lower the lumbar support manually, to the desired height.

BASE

BG065.L - 5 star polished aluminium base Ø 690 mm
BG064.N - 5 star black nylon base Ø 680 mm



CASTORS AND GLIDERS



R26 - Oversize self breaking castors in PP Ø 65 mm



R21 - Oversize hard floor castors, chromed in PP Ø 60 mm



R27 - Hard floor oversize self breaking black castors in PP, Ø 65 mm



P03 - Set of high chromed metal gliders



R28 - Hollowed hard floor oversize self-breaking black castors in PP Ø 65 mm



P04 - Set of high black nylon gliders

BASE

BG064.W - 5 star white nylon base Ø 680 mm



CASTORS



R23 - Oversize hard floor self breaking white castors in PP, Ø 60 mm, pivot Ø 11 mm



R24 - Hollowed oversize self breaking white castors in PP, Ø 65 mm, pivot Ø 11 mm



LEX
MESH BACK
TASK CHAIR



UNI EN 1335 part. 1/2/3 tip. A
(only for version without headrest)

COMPOSITION AND MATERIALS

PLASTICS

Black or white (RAL 9003) plastic structure

**STRUCTURE,
PADDING**

- PA (nylon) frame with sliding seat (range 60 mm)
- Injected foam seat padding, density 60kg/m³
- PA (nylon) fixed backrest, padded with GO mesh
- Height adjustable nylon lumbar support

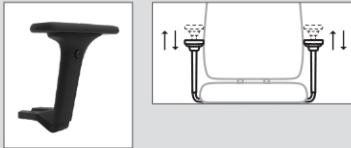
HEADREST

Available with height and tilt adjustable padded headrest (range 60 mm), with injected foam, density 65 kg/m³ (cannot be added after purchase), fire retardant

ARMRESTS

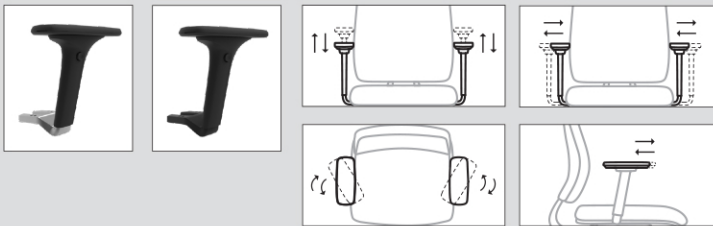
- **Black plastics**

BR009.N - Height adjustable black nylon armrests with PU armpads



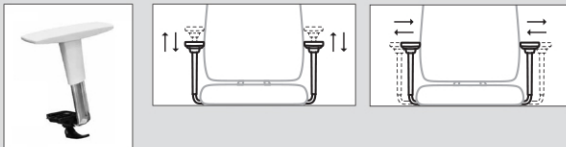
BR010.L - 4D adjustable polished aluminum armrests with PU armpads

BR010.N - 4D adjustable black nylon armrests with PU armpads

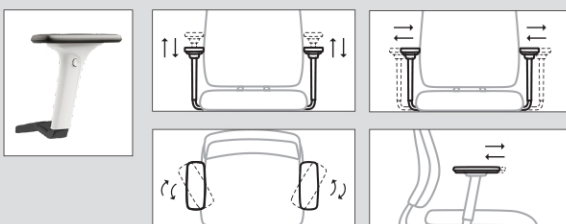


- **White plastics**

BR196.W - 2D adjustable armrests with white plastic pads and chromed metal frame



BR010.W - 4D adjustable white nylon armrests with PU armpads



MECHANISM AND SEAT REGULATION

MS11K - Synchronized mechanism with 5 locking positions



Seat height
Pull the lever A upwards without sitting to increase the height of the seat. Press the lever A upwards to reduce the height of the seat.



Tilting of the chair
Pull the lever B upwards to unlock the swing. Press Lever B downwards to lock in the desired position.



Tension control
Turn lever C clockwise to decrease the tilting resistance. Turn lever C counterclockwise to increase the tilting resistance.



Sliding seat
Press the button situated on the right side of the seat to adjust the seat depth. Release the button to lock the seat in the desired position.



Lumbar support height adjustment
Raise or lower the lumbar support manually, to the desired height.

BASE

BG065.L - 5 star polished aluminium base Ø 690 mm
BG064.N - 5 star black nylon base Ø 680 mm



CASTORS AND GLIDERS



R26 - Oversize self breaking castors in PP Ø 65 mm



R21 - Oversize hard floor castors, chromed in PP Ø 60 mm



R27 - Hard floor oversize self breaking black castors in PP, Ø 65 mm



P03 - Set of high chromed metal gliders



R28 - Hollowed hard floor oversize self-breaking black castors in PP Ø 65 mm



P04 - Set of high black nylon gliders

BASE

BG064.W - 5 star white nylon base Ø 680 mm



CASTORS



R23 - Oversize hard floor self breaking white castors in PP, Ø 60 mm, pivot Ø 11 mm



R24 - Hollowed oversize self breaking white castors in PP, Ø 65 mm, pivot Ø 11 mm

LEX
VISITOR CHAIR



CATAS

UNI EN 16139; UNI EN 1728; UNI EN 1022

COMPOSITION AND MATERIALS

PLASTIC

Black or white (RAL 9003) plastic structure

**STRUCTURE,
PADDING**

- PP inner seat frame with polyurethane foam padding, density 40 Kg/m³, thickness 30 mm, fire retardant
- PP backrest with polyurethane foam padding, density 30 Kg/m³, thickness 20 mm, fire retardant
- PA (nylon) backrest frame padded with GO mesh
- Stackable up to 6 chair

ARMRESTS

BR192.N - Black plastic fixed armrests
BR192.W - White plastic fixed armrests

BASE

BS158.C - Chromed metal cantilever base,
Ø 25 mm, thickness 1,5 mm

BS157.C - Chromed metal 4 legged base,
Ø 25 mm, thickness 1,5 mm



LEX
SWIVEL CHAIR



COMPOSITION AND MATERIALS

PLASTICS

Black or white (RAL 9003) plastic structure

STRUCTURE, PADDING

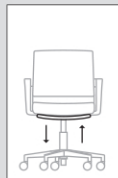
- PP Seat frame padded with polyurethane foam, density 40 Kg/m³, thickness 30 mm, fire retardant
- PP Backrest padded with polyurethane foam, density 30 Kg/m³, thickness 20 mm, fire retardant
- PA Backrest frame padded with GO mesh

ARMRESTS

BR192.N - Black plastic fixed armrests
BR192.W - White plastic fixed armrests

MECHANISM AND SEAT REGULATION

MG1AD - Tilt mechanism with height adjustment in Polish aluminium



Seat height

Push the button situated underneath the seat to increase the height of the seat.

BASE

BG065.L - 5 star polished aluminium base Ø 690 mm
BG064.N - 5 star black nylon base Ø 680 mm



CASTORS AND GLIDERS



R26 - Oversize self breaking castors in PP Ø 65 mm



R21 - Oversize hard floor castors, chromed in PP Ø 60 mm



R27 - Hard floor oversize self breaking black castors in PP, Ø 65 mm



P03 - Set of high chromed metal gliders



R28 - HOLLOWED hard floor oversize self-breaking black castors in PP Ø 65 mm



P04 - Set of high black nylon gliders

BASE

BG064.W - 5 star white nylon base Ø 680 mm



CASTORS



R23 - Oversize hard floor self breaking white castors in PP, Ø 60 mm, pivot Ø 11 mm



R24 - HOLLOWED oversize self breaking white castors in PP, Ø 65 mm, pivot Ø 11 mm

LEX
STOOL



COMPOSITION AND MATERIALS

PLASTICS

Black or white (RAL 9003) plastic structure

**STRUCTURE,
PADDING**

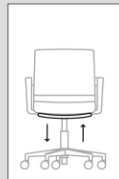
- PP Seat frame padded with polyurethane foam, density 40 Kg/m³, thickness 30 mm, fire retardant
- PP Backrest padded with polyurethane foam, density 30 Kg/m³, thickness 20 mm, fire retardant
- PA Backrest frame padded with GO mesh

ARMRESTS

BR192.N - Black plastic fixed armrests
BR192.W - White plastic fixed armrests

**MECHANISM
AND SEAT
REGULATION**

MG1AD - Tilt mechanism with height adjustment in polished aluminium



Seat height

Push the button situated underneath the seat to increase the height of the seat.

FOOTREST

Footrest Ø 450 mm, adjustable in height, lockable by means of a retractable lever, composed of a chromed metal ring Ø 16 mm and black nylon structure



BASE

BG065.L - 5 star polished aluminium base Ø 690 mm
BG064.N - 5 star black nylon base Ø 680 mm



GLIDERS



P03 - Set of high chromed metal gliders



P04 - Set of high black nylon gliders